



June 22, 2011

Mr. Aren Cambre
Southern Methodist University
P.O. Box 750262
Dallas, TX 75275-0262

Re: Texas Public Information Act Request

Dear Mr. Cambre:

On June 14, 2011, the Public Information Office received your request for a copy of the engineering documents that show the warrants satisfied for erection of the stop sign at the intersection of W. Lawther Road and White Rock Road, in the State of Texas, in accordance with Chapter 552 of the Texas Government Code, Texas Public Information Act, previously Texas Open Records (ACT).

The documents you requested are attached.

If you have any questions or need assistance, please contact Ms. Carol Swain at (214) 670-4024 or via e-mail at carol.swain@dallascityhall.com.

Sincerely,

Steven Cherrholmes FOR

Elizabeth A. Ramirez, P.E.
Assistant Director
Department of Street Services

EAR/cjswd4329
11-00312955

Enclosure

MULTI-WAY STOP WARRANT STUDY - T.M.U.T.C.D. (2006)

THROUGH STREET: WHITE ROCK / LAWTHER

CROSS STREET: LAWTHER

1a. Has a traffic signal been warranted at the location? YES --> Go to 1b. NO --> Go to 2a.

1b. Is an interim multi-way stop requested? YES --> Go to 5a. NO --> Go to 1c.

1c. Is traffic control urgently needed until signal is installed? YES --> Go to 5a. NO --> Go to 2a.

CRASH HISTORY CONSIDERATION:

2a. How many reported crashes are listed in Police Department POLARIS files at this location during the most recently available 12-month period? 0

2b. Of the crashes noted above (in 2a.), are any susceptible to correction by installation of a multi-way stop? YES --> Go to 2c. NO --> Go to 3a.

2c. Is the number of crashes noted above (in 2b.) at least five (5)? YES --> Go to 5a. NO --> Go to 3a.

OPTIONAL WARRANTS:

2A. Is there a need to control left-turn conflicts? YES --> Go to 5a. NO --> Go to 3a.

2B. Is there a need to control vehicle/pedestrian conflicts near locations that generate high pedestrian volumes? YES --> Go to 5a. NO --> Go to 3a.

2C. Is there a visual obstruction that will prevent the safe movement of vehicles unless the conflicting traffic is also required to stop? YES --> Go to 5a. NO --> Go to 3a.

2D. Will a multi-way stop improve traffic operational characteristics of an intersection if the two streets are of similar design and operating characteristics? (residential-neighborhood collector-through-streets only) YES --> Go to 5a. NO --> Go to 3a.

MINIMUM TRAFFIC VOLUMES CONSIDERATION:

3a. Does the total vehicular volume entering the intersection from the major street (both approaches) average at least 300 vehicles per hour for any eight (8) 1-hour periods of an average day? YES --> Go to 3b. NO --> Go to 4a.

3b. Does the combined vehicular and pedestrian average volume from the minor street or highway (both approaches) average at least 200 units per hour for the same eight (8) 1-hour periods noted (in 3a.) above? YES --> Go to 3c. NO --> Go to 4a.

3c. Is the average delay to minor-street vehicular traffic at least 30 seconds per vehicle during the maximum hour of the eight (8) 1-hour periods noted (in 3b.) above? YES --> Go to 5a. NO --> Go to 4a.

SPEED SURVEY CONSIDERATION:

4a. What is the 85th-percentile approach speed of the major street? 30 MPH

4b. Is the 85th-percentile speed at least 40 MPH? YES --> Go to 4c. NO --> Go to 5b.

4c. Are the vehicular volumes at least 70% of the requirements as specified above (items 3a. &/or 3b.)? YES --> Go to 5a. NO --> Go to 5b.

CONFORMANCE TO TMUTCD GUIDELINES:

5a. Location conforms to TMUTCD recommended guidelines for installation of a multi-way stop.

5b. Location does not conform to TMUTCD recommended guidelines for installation of a multi-way stop.

6. Is installation of a multi-way stop recommended? YES NO

By: M. Bah Date: 4/20/11 Comment: _____

File name: Multi-way Stop Warrant TMUTCD (2006) Rev. 7-26-2006

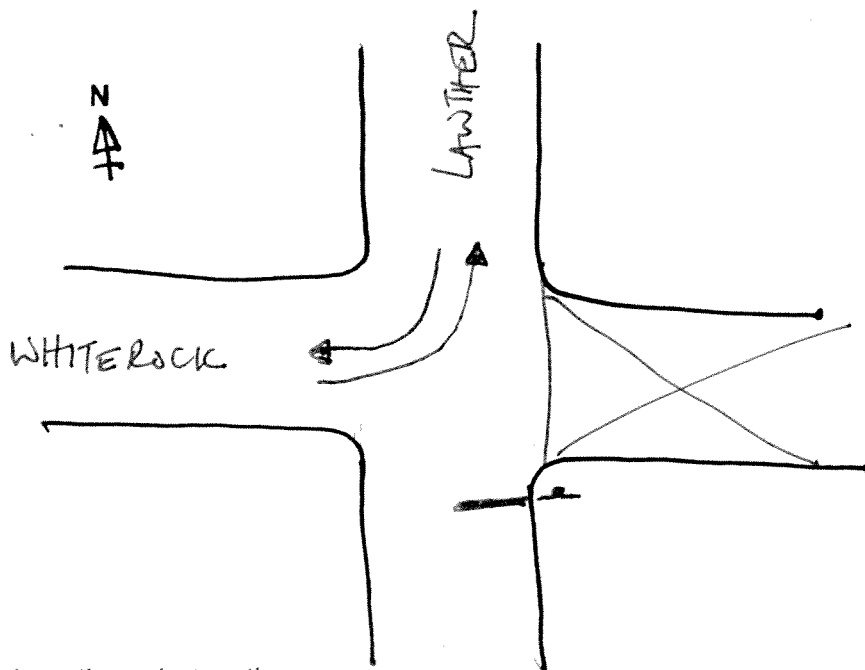
ALL-WAY STOP : Dallas Residential

Location: WHITEROCK @ LAWYER

Date: 4/20/11

Study by: M. Bay

10 Min. Interval	-->	<--	^ 	 v
10:00 - 10:10	10	X	1	15
10:10 - 10:20	12		5	18
10:20 - 10:30	8		3	11



Location observations:

- S.Z.? N
- Dips? N
- Curbs/gutters? N
- Strictly residential? N
- Posted speed limit? Y
- Sight distances OK? N
- Pavement condition? Good
- Res. fronting through street? N
- Abutting school ground or playground? N
- One-Way involvement? N
- Emergency response route? N